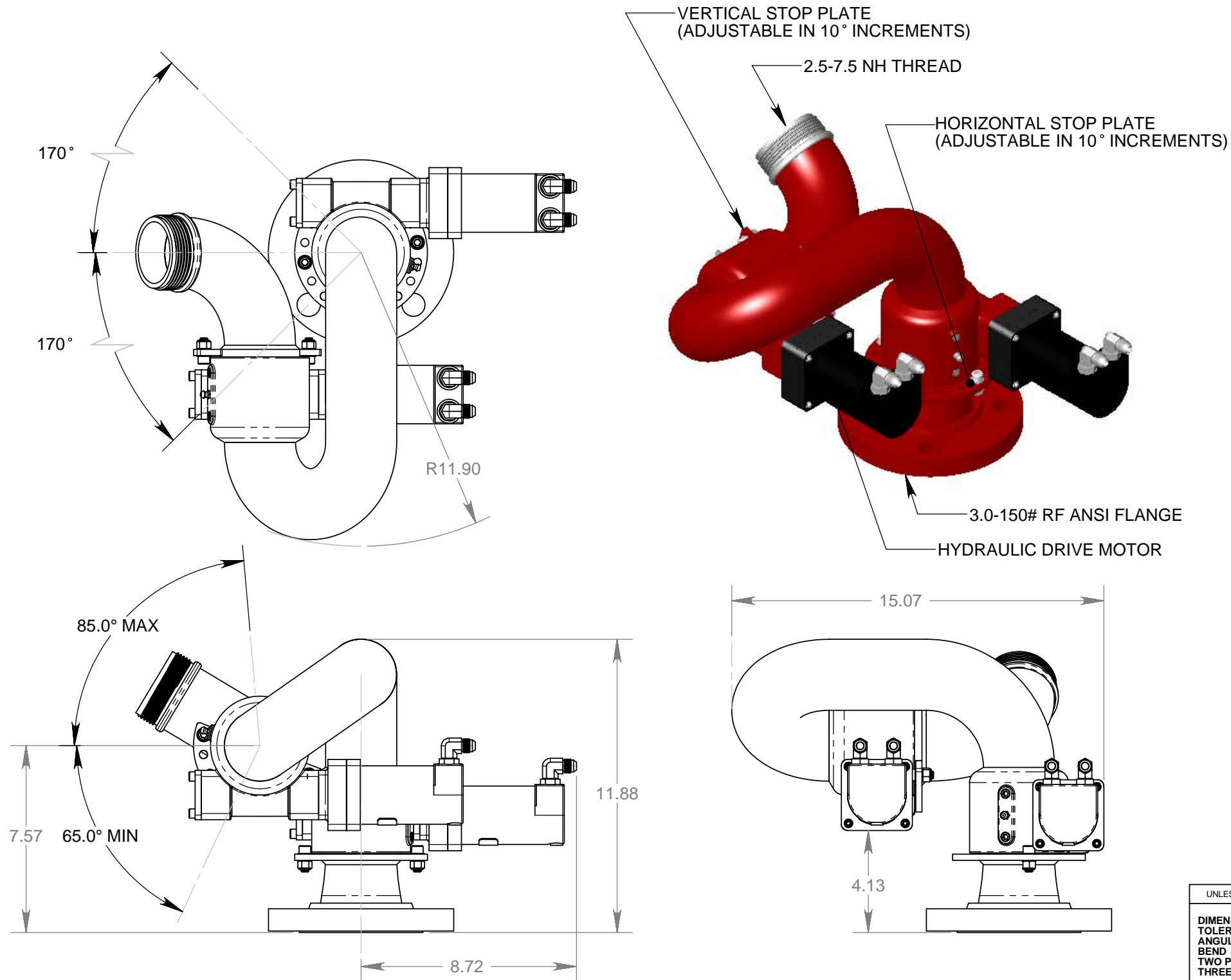


# TECHNICAL DATA SHEET



## SPECIFICATIONS:

### WATER:

FLOW RATE: 250-1000 USGPM  
 OPER. PRESSURE RANGE: 50-150 PSIG  
 PRESSURE LOSS @ 750 USGPM: 18 PSIG  
 OPTIMUM OPER. PRESSURE: 120PSIG (INLET)

### HYDRAULICS:

FLOW RATE: .25 USGPM  
 OPER. PRESSURE RANGE: 200-300 PSIG  
 OPTIMUM PRESS.: 200 PSIG

### SPEED:

VERTICAL SWEEP RATE: 9.8°/SEC. @ .50 GPM  
 HORIZONTAL SWEEP RATE: 9.8°/SEC. @ .50 GPM

### MOUNTING:

INLET: 3.0" 150# RF FLANGE  
 OUTLET: 2.5-7.5 MALE NH THREAD

### MATERIALS:

WATERWAY: CARBON STEEL (COATED INSIDE AND OUT)  
 SWIVELS: STAINLESS STEEL  
 THREAD BUTT: STAINLESS STEEL  
 UNIT WEIGHT: 52 LBS (DRY)

UNLESS OTHERWISE SPECIFIED:		NAME	DATE	<b>FirePro Monitors</b> City of Industry, CA 91744	
DIMENSIONS ARE IN INCHES		DRAWN	RBS 09/25/07		
TOLERANCES:		CHECKED			
ANGULAR: MACH ±1°		Q.A.			
BEND ±2°		<b>MONITOR, 2.5" HYD. ULTRA-LOW</b>			
TWO PLACE DECIMAL ±.030					
THREE PLACE DECIMAL ±.005					
ALL MACHINED SURFACES $\sqrt{125}$					
INTERPRET GEOMETRIC TOLERANCING PER: ANSI Y14.5		COMMENTS:	SIZE	DWG. NO.	REV
MATERIAL			<b>B</b>	<b>FP10400</b>	<b>A</b>
FINISH					
DO NOT SCALE DRAWING			SCALE: 1:5	WT:	SHEET 1 OF 1

### PROPRIETARY AND CONFIDENTIAL

THE INFORMATION CONTAINED IN THIS DRAWING IS THE SOLE PROPERTY OF FIREPRO MONITORS. ANY REPRODUCTION IN PART OR AS A WHOLE WITHOUT THE WRITTEN PERMISSION OF FIREPRO MONITORS IS PROHIBITED.